

Creating Polls in Collaborate

Polls allow you to send a question for students to answer. It can be used for to gather opinions from your students. Check out this [short video](#) created by Blackboard for a brief introduction to polling.

1. Open the **Collaborate** panel.
2. Select **Share Content**, then select **Polling** (Figure 1).
3. Select either **Multiple Choice** or **Yes/No Choices** (Figure 2).

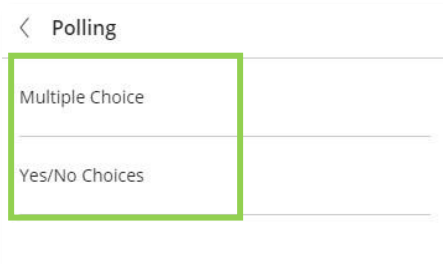


FIGURE 2

4. Type the question you'd like to ask. You can also leave the question blank if you'd like. If you selected Multiple Choice, type the answer choices. You can click **Add choice** to add additional choices (Figure 3).

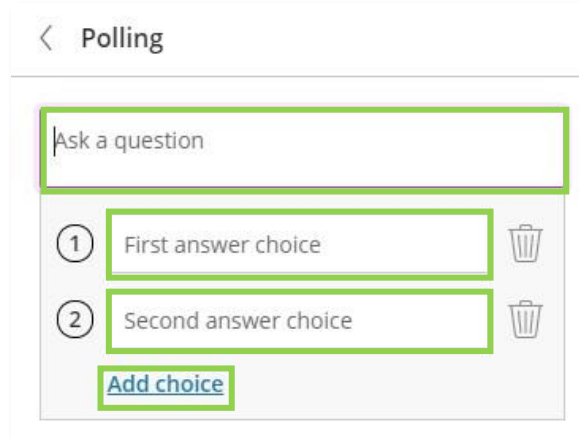


FIGURE 3

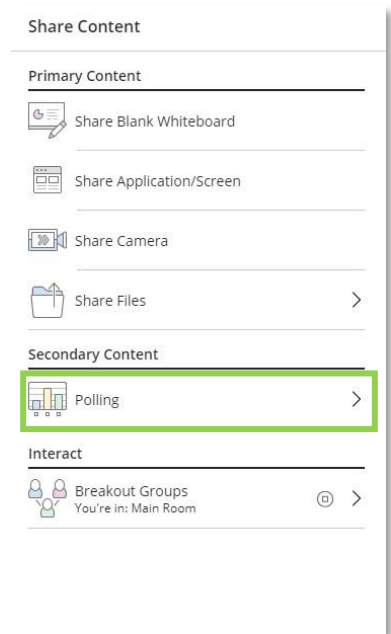


FIGURE 1

5. Click Start to begin the poll.



Creating Polls in Collaborate

Monitoring your Poll

Upon creating your poll, you will be able to see a live overview of poll responses. You can see the number of attendees who answered for each choice, as well as the number of attendees who haven't answered yet (Figure 4). You can click the **poll icon** next to the Raise Hand to show and hide the response overview.

You can stop the poll by clicking the **stop** button. You can allow participants to view who responded to each option by clicking **Show Responses**. To see how each attendee responded, open the **Attendees** panel.

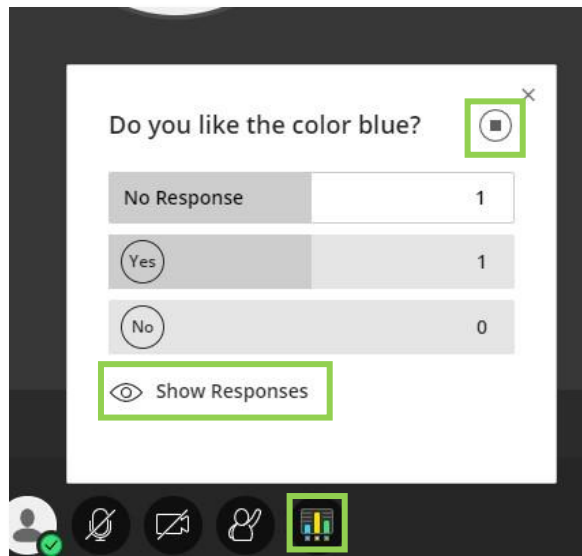


FIGURE 4

Download Poll Results

To download poll results, go to the Session options menu after you leave the session. Locate your session, then click the download arrow in the Polls column (Figure 5).


Reports: Online Class				Filter by
Attendees	Duration	Polls	Attendance	
1	00:05:23		View report	
2	00:15:23		View report	
2	00:59:56		View report	
1	00:16:06		View report	
1	00:09:57		View report	
2	00:50:54		View report	
1	00:40:28		View report	

FIGURE 5